

# Kerotest Needle Valves

## Double Block and Bleed



### Product Brief

The Kerotest Double Block & Bleed Needle Valves are built for applications with pressures up to 10,000 psig (689 bar). The design combines isolation and venting in a single valve, eliminating the need for tubing and fittings. This operator-friendly valve design features fully captured stems, consistent sealing during system depressurization or repressurization under a range of pressures, and a low-torque, easy-turn ergonomic handle.

### Features/Benefits

- Block valve isolates the downstream process fluids and the bleed valve exhausts upstream fluids, enabling instruments to be removed without disturbing the permanent piping installation on the bottom.
- The 1/4" NPT bleed plug is located 90 degrees to the left and may be removed and replaced with exhaust piping to direct the fluids to a safe location.
- 10,000 psi (689 bar) or 6,000 psi (414 bar) hard seat pressure rating @ 200°F (93°C)
- LDPE dust cap for bonnet and stem (non-packing)
- Temperature limits: -20°F to +450°F (-29°C to +232°C)
- Body and bonnet material: ASTM A182 F316 stainless steel or A105 carbon steel
- Finish: Stainless steel is passivated; Carbon steel is zinc plated

*All product names referenced herein are trademarks of their respective companies.*

# Kerotest Double Block and Bleed Needle Valves

## Specifications and Dimensions

Catalog PN	Part No	Fig	Type	End Connections	Material	MOP* PSI (Bar)
KM35VIS-4	60001196	1	FF	1/2 NPT (F) x 1/2 NPT (F)	316 SS	6,000 (414)
KM35VIS-44	60001197	2	MF	1/2 NPT (M) x 1/2 NPT (F)	316 SS	6,000 (414)
KM35VIC-44	60001198	2	MF	1/2 NPT (M) x 1/2 NPT (F)	A105 CS	6,000 (414)
KM35VIS-2	60001199	1	FF	1/4 NPT (F) x 1/4 NPT (F)	316 SS	6,000 (414)
KM35VIS-22	60001200	2	MF	1/4 NPT (M) x 1/4 NPT (F)	316 SS	6,000 (414)
KM35VIC-22	60001201	2	MF	1/4 NPT (M) x 1/4 NPT (F)	A105 CS	6,000 (414)
KM35VIS-4M	60001206	4	MM	1/2 NPT (M) x 1/2 NPT (M)	316 SS	6,000 (414)
KM35VIS-44F	60001207	3	FM	1/4 NPT (F) x 1/4 NPT (M)	316 SS	6,000 (414)
KM351VIS-4	60001302	1	FF	1/2 NPT (F) x 1/2 NPT (F)	316 SS	10,000 (689)
KM351VIS-44	60001303	2	MF	1/2 NPT (M) x 1/2 NPT (F)	316 SS	10,000 (689)
KM351VIC-44	60001304	2	MF	1/2 NPT (M) x 1/2 NPT (F)	A105 CS	10,000 (689)
KM351VIS-2	60001305	1	FF	1/4 NPT (F) x 1/4 NPT (F)	316 SS	10,000 (689)
KM351VIS-22	60001306	2	MF	1/4 NPT (M) x 1/4 NPT (F)	316 SS	10,000 (689)
KM351VIC-22	60001307	2	MF	1/4 NPT (M) x 1/4 NPT (F)	A105 CS	10,000 (689)
KM351VIS-4M	60001308	4	MM	1/2 NPT (M) x 1/2 NPT (M)	316 SS	10,000 (689)
KM351VIS-44F	60001309	3	FM	1/4 NPT (F) x 1/4 NPT (M)	316 SS	10,000 (689)

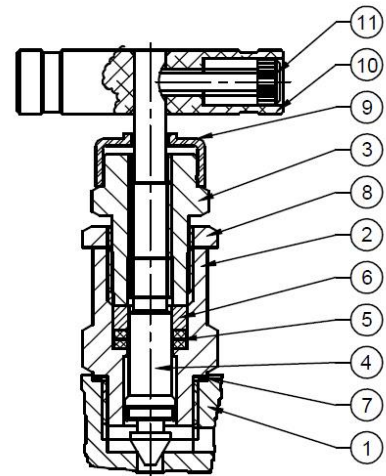
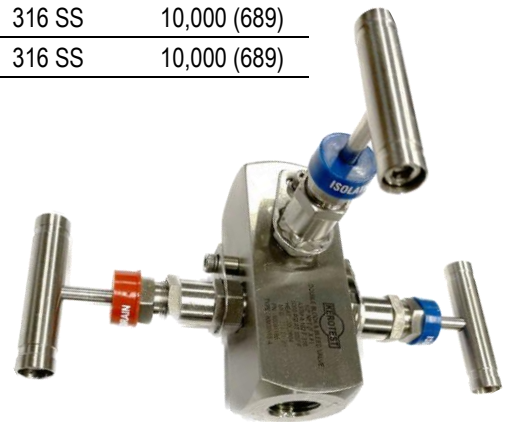
\* MOP: Maximum Operating Pressure

### Testing Methods

- 100% of all valves tested
- Shell test: hydro to 1.5 X maximum operating pressure (MOP)
- Seat test: hydro to 1.1 X MOP, air to 100 psi (7 bar)

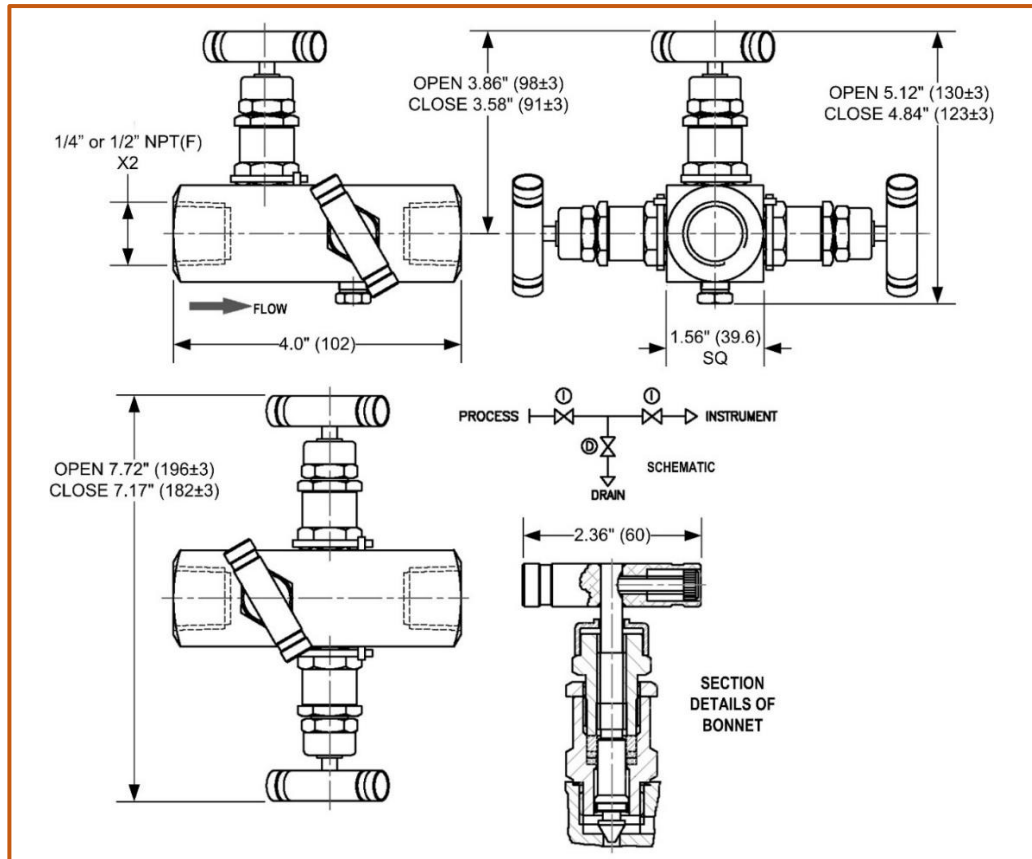
### Materials of Construction

Item	Description	Material	Note
1	Valve Body	ASTM A182 316 SS or ASTM A105 CS	
2	Bonnet	AISI 316 SS or CS	
3	Bonnet Gland Pusher	AISI 316 SS or CS	
4	Stem	AISI 316 SS 17-4PH	
5	Packing	PTFE	
6	Washer	AISI 316 SS	
7	Bonnet Seal	AISI 316 SS	
8	Check Nut	AISI 316 SS or CS	
9	Dust Cap	LDPE	
10	Handle	304 SS	
11	Allen Bolt	304 SS	
12	Locking Plate	304 SS	Not shown
13	Vent Plug (1/4" NPT-M)	AISI 316 SS	Not shown

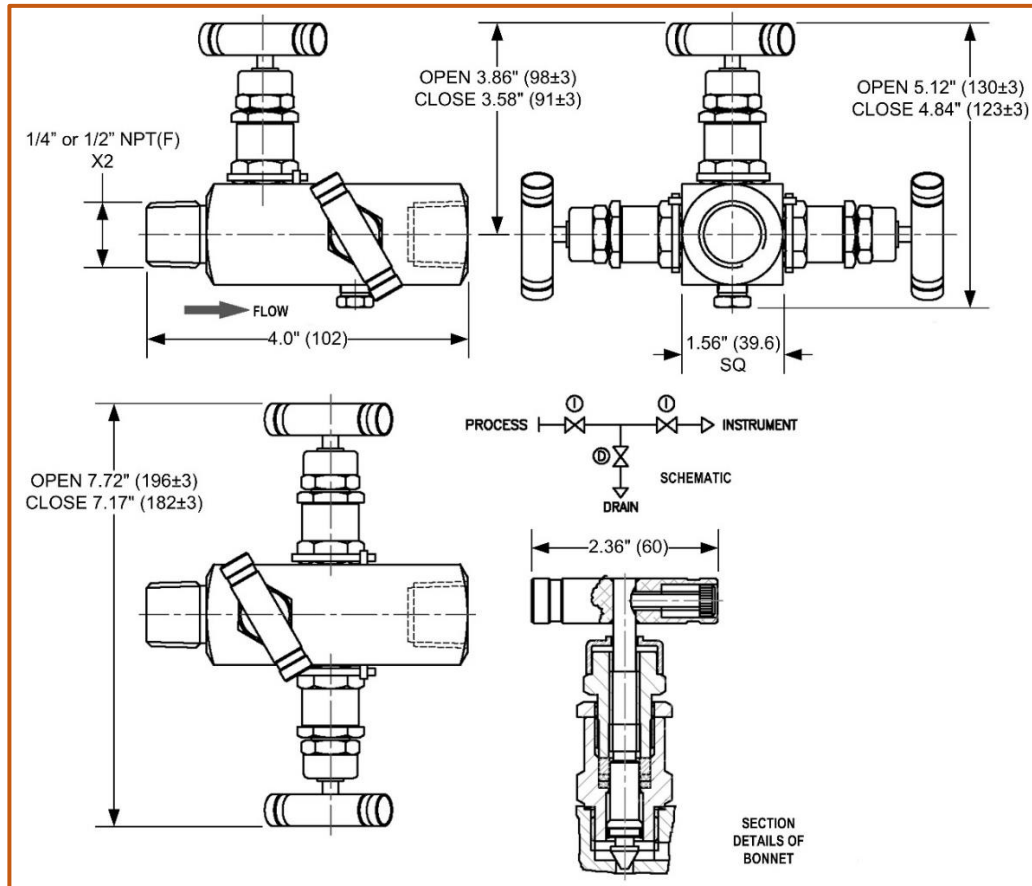


# Kerotest Double Block and Bleed Needle Valves

**FIGURE 1: Female X Female Threaded Connections**

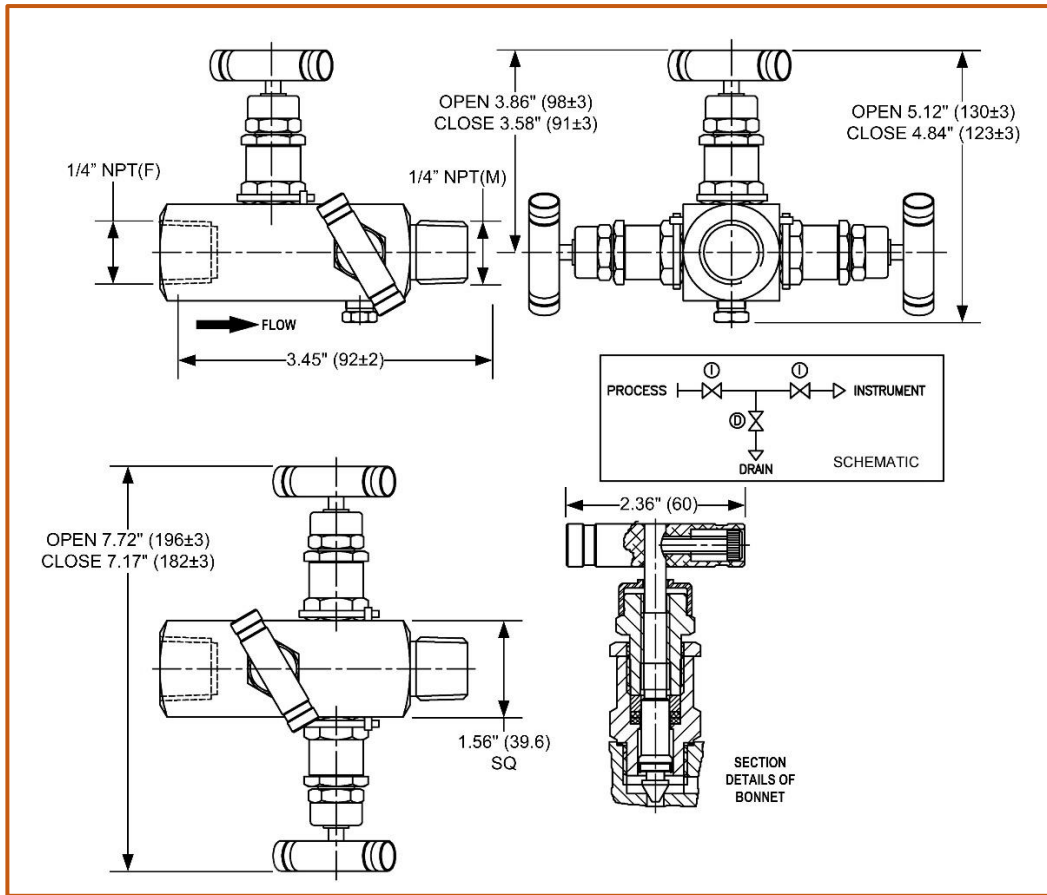


**FIGURE 2: Male X Female Threaded Connections**

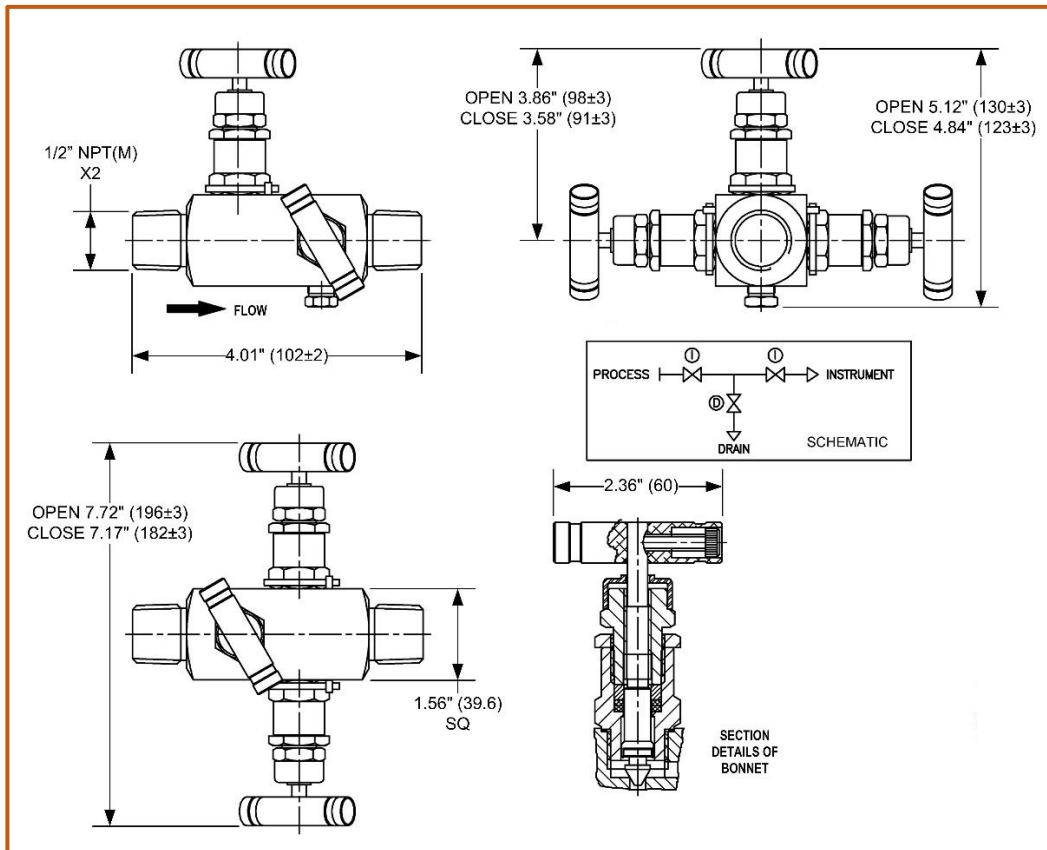


# Kerotest Double Block and Bleed Needle Valves

**FIGURE 3: Female X Male Threaded Connections**



**FIGURE 4: Male X Male Threaded Connections**



# Kerotest Double Block and Bleed Needle Valves

**Catalog Convention**      KM   35   V   I   S - 4M   *Example\*\**

## Style

- 35 – Double Block and Bleed, 6,000 PSI
- 351 – Double Block and Bleed, 10,000 PSI

## Packing

- V – PTFE

## Seat

- I – Integral

## Body Material

- C – Carbon Steel (A105)
- S – Stainless Steel (A182 316)

## Process Connections (Inlet x Outlet)

- 2 – ¼" FNPT x ¼" FNPT
- 22 – ¼" MNPT x ¼" FNPT
- 4 – ½" FNPT x ½" FNPT
- 4M – ½" MNPT x ½" MNPT
- 44 – ½" MNPT x ½" FNPT
- 44F – ½" FNPT x ½" MNPT

## Optional:

Sour gas service valves are available conforming to ANSI/NACE MR0175-2021/ISO 15156:2020. Contact Kerotest for further information.

\*\* Example: **KM35VIS-4M**

Kerotest 6,000 psi (414 bar) Rated Double Block and Bleed Needle Valve with PTFE Packing, Integral Seat, Stainless Steel Body and Bonnet, ½" Male NPT Threads (Both Ends)